



INSIGHT



THIS MONTH...

- 2024 CALENDAR
- PLUTO IN AQUARIUS
- URANUS SD
- MERCURY SD
- JANUS, SATURN & TIME



www.celestialinsight.com.au

mfinney@cinsight.com.au

JANUARY 2024

Welcome to 2024 and another year of INsight! This month Pluto crosses back into Aquarius around the same time as the Sun, illuminating the creative possibilities the future may bring.

Uranus stations direct too this month, encouraging us to jump onboard. Mercury also goes direct, so there is likely to be an exciting start to a year full of opportunities. Of course there are always challenges in life, so how we manage them is always an important consideration, as is our attitude.

When describing astrological transits, bear in mind that they may or may not be making a direct aspect to your birth chart. When you read my comments in INsight, look to see if the transit in question is making a connection to your natal chart, and if it is, you are more likely to notice it.





CAPRICORN NEW MOON

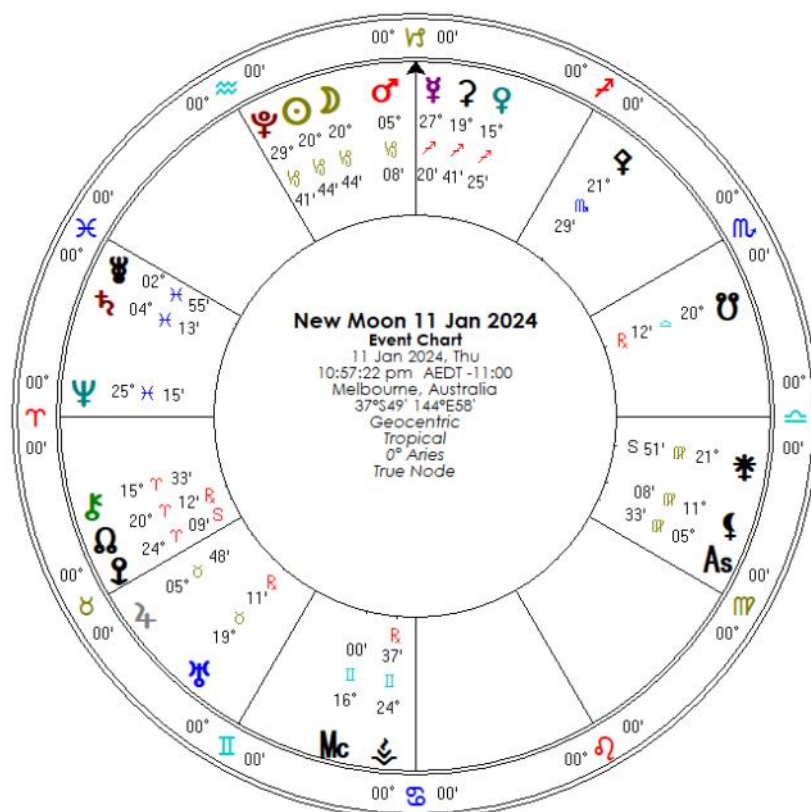
This Capricorn New Moon squares the nodal cusp of Aquarius and will shift axis, foreshadowing back across this threshold this some potentially difficult month. The prolonged transition of decisions. Cardinal signs are associated with initiative and leadership. They ask us to plan, prioritise and implement, which involves making choices. With the nodal axis within orb of Chiron, and stationary Eris, choosing which path to follow could be difficult.

Note that Pluto is on the Moon squares the nodal cusp of Aquarius and will shift axis, foreshadowing back across this threshold this some potentially difficult month. The prolonged transition of decisions. Cardinal signs are associated with initiative and leadership. They ask us to plan, prioritise and implement, which involves making choices. With the nodal axis within orb of Chiron, and stationary Eris, choosing which path to follow could be difficult.



Sometimes cardinal signs can overcommit. If we are unwilling to forego any options, we can become overloaded with too many burdens. Workloads and timelines can blow out if we take on too much at once.

Some positive help is coming from Juno, asteroid goddess of marriage, who is stationary, and located in practical Virgo, making a trine aspect to the Sun and Moon. Juno is known for her loyalty and her ability to make a firm commitment and honour it. Saturn and Jupiter are also providing assistance, in a useful sextile aspect, which facilitates productivity.



ASTROLOGY CALENDAR

A COMPREHENSIVE AUSTRALIAN ASTROLOGY GUIDE

2024 edition now in stock

Gift idea

How will the
stars influence
your world
in 2024?

[Order your 2024 calendar available now](#) Hard copy or download.



12 months of all original Australian Imagery

CELESTIAL INSIGHTS ASTROLOGY CALENDAR

FEATURES

All daily timed Ingresses for the Sun, Moon and planets, including Chiron and Ceres
All planetary stations
New Moons, Full Moons & Eclipses
Solstices and Equinoxes
Key positions of Venus
Lunar Perigees and Supermoons
Inferior & superior conjunctions of Venus and Mercury
Major aspects
Monthly analysis of key stellar events with advice and guidance
Global trends for the year ahead
Solstice and Equinox reports
Beginners section
Easy to read – no glyphs
National holidays
Important days to remember
Beautiful original Images

This 32-page astrology calendar is suitable for those who are new to astrology, students of astrology and the professional astrologer.

It includes an introductory section on astrology basics that explains the meaning of planets and signs. An easy reference guide, it examines prevailing astrological conditions and suggests ways to take advantage of opportunities as they arise. For professional astrologers this calendar replaces the need to constantly refer to your ephemeris. It provides easy access to relevant astrological data for general daily use. It also includes planetary information that is not found in ephemerides, such as lunar perigees, Supermoons, key positions of Venus and more.

Celestial Insights 2024 Astrology Calendar
www.celestialinsight.com.au
© Celestial Insight (Michele Finney)

Made in Australia





LEO FULL MOON

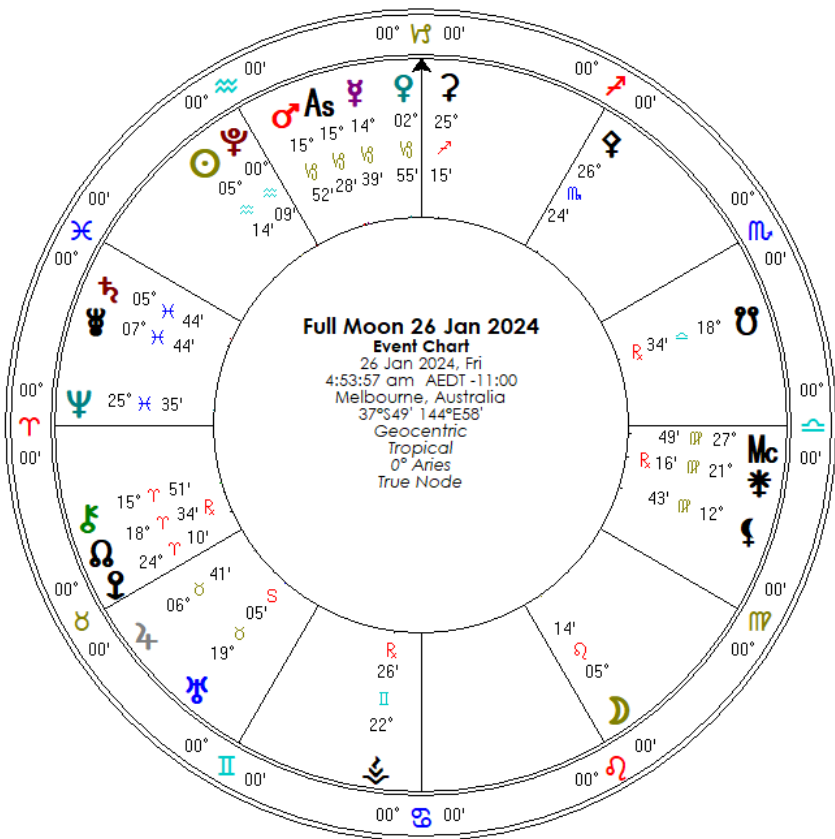
At this Full Moon, Pluto has just crossed back into Aquarius territory, where he will remain for several months. Pluto still has unfinished business in Capricorn, but for now, with the Sun illuminating Aquarius, we can see more clearly the direction we are heading, collectively speaking.

Sun-Pluto conjunctions are powerful aspects which illuminate the unknown. This aspect helps us to see very clearly anything which is normally concealed. We are often unconscious of emotions that lie beneath the surface, but facing them can set us free. It's often the fear itself that is the main issue.

This Sun-Moon-Pluto aspect also describes how we can be quick to make judgements, projecting onto others the unconscious aspects of ourselves that we are unwilling to face. Sun-Pluto conjunctions are powerful aspects that make us face the unknown parts of ourselves. This Full Moon illuminates emotions and helps us

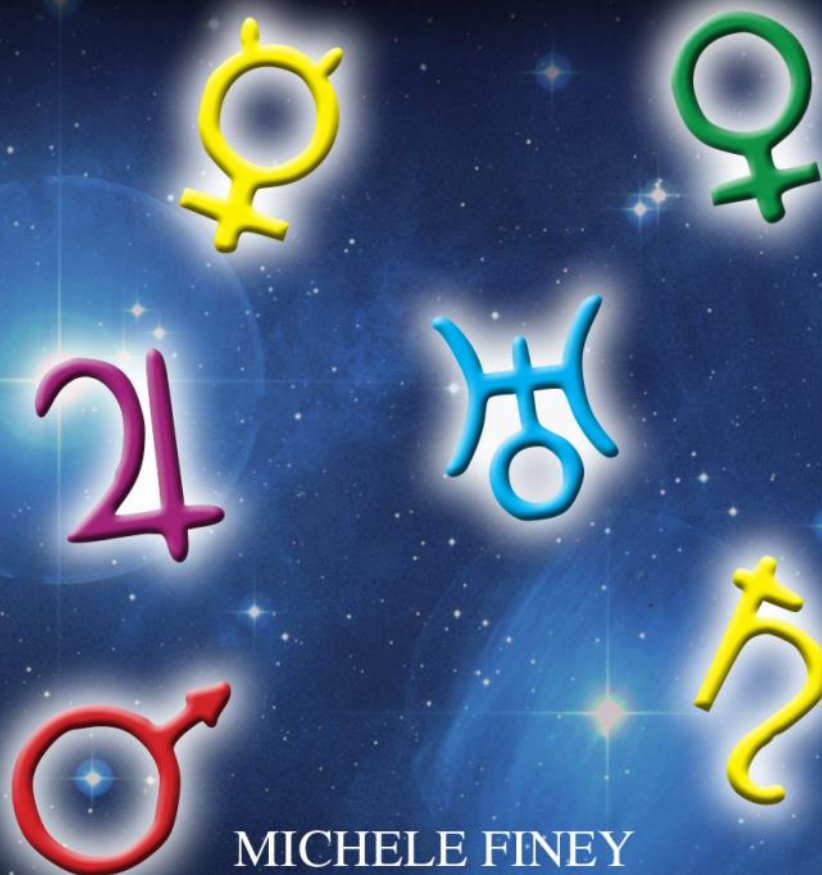
understand them. Oppositions reflect ourselves back to us, via our dealings with others. With Jupiter squaring this Full Moon, we can be confident and positive about the outcome.

Adding to the exciting anticipation, Uranus is stationing direct in a day or so, so it's not just emotions that will be revealed, but also creative ideas which will likely spring to consciousness.

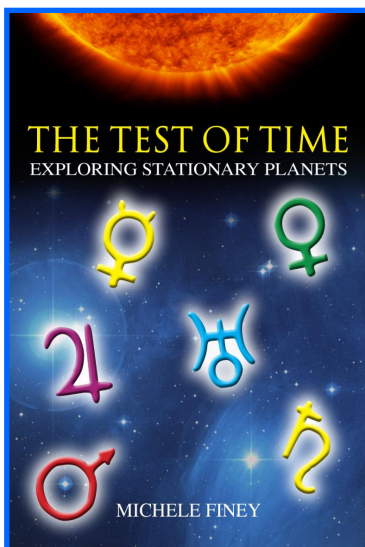


THE TEST OF TIME

EXPLORING STATIONARY PLANETS



MICHELE FINEY



Packed with fascinating case histories that illuminate the power of stationary planets.

Read Ana Isabel's [Review](#)

Read Ray Grasse's [Review](#)

More [Reviews](#)



Order your copy

[The Test of Time](#)

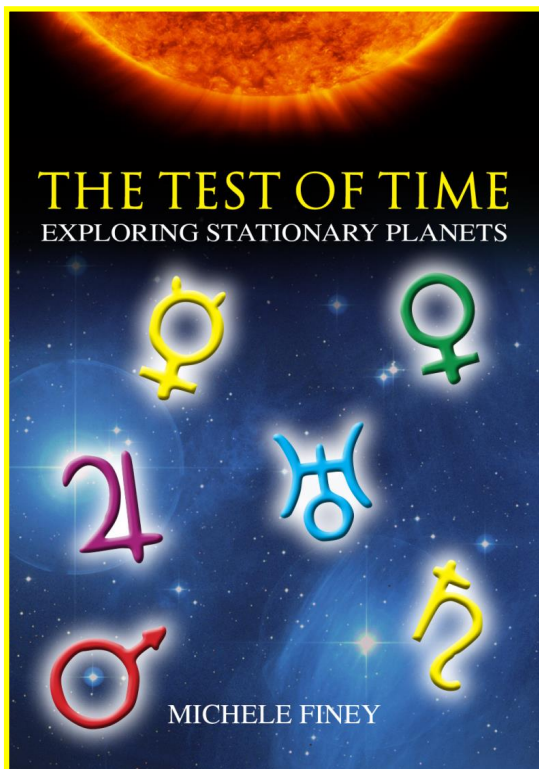
[Exploring Stationary Planets](#)

~ ~ ~

[Watch interview](#)

How should we interpret motionless planets?
What kinds of challenges and opportunities do
they symbolise?

Packed with a host of fascinating case histories of
well-known people and events, *The Test of Time*
documents the phenomenon of stationary plan-
ets, including a range of dwarf planets and aster-
oids.



[Place an order](#)

[The Sacred Dance of](#)

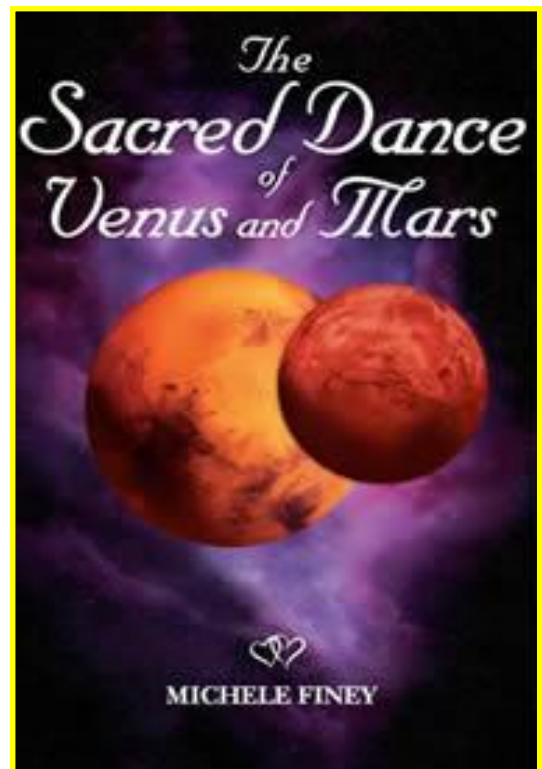
[Venus and Mars](#)

~ ~ ~

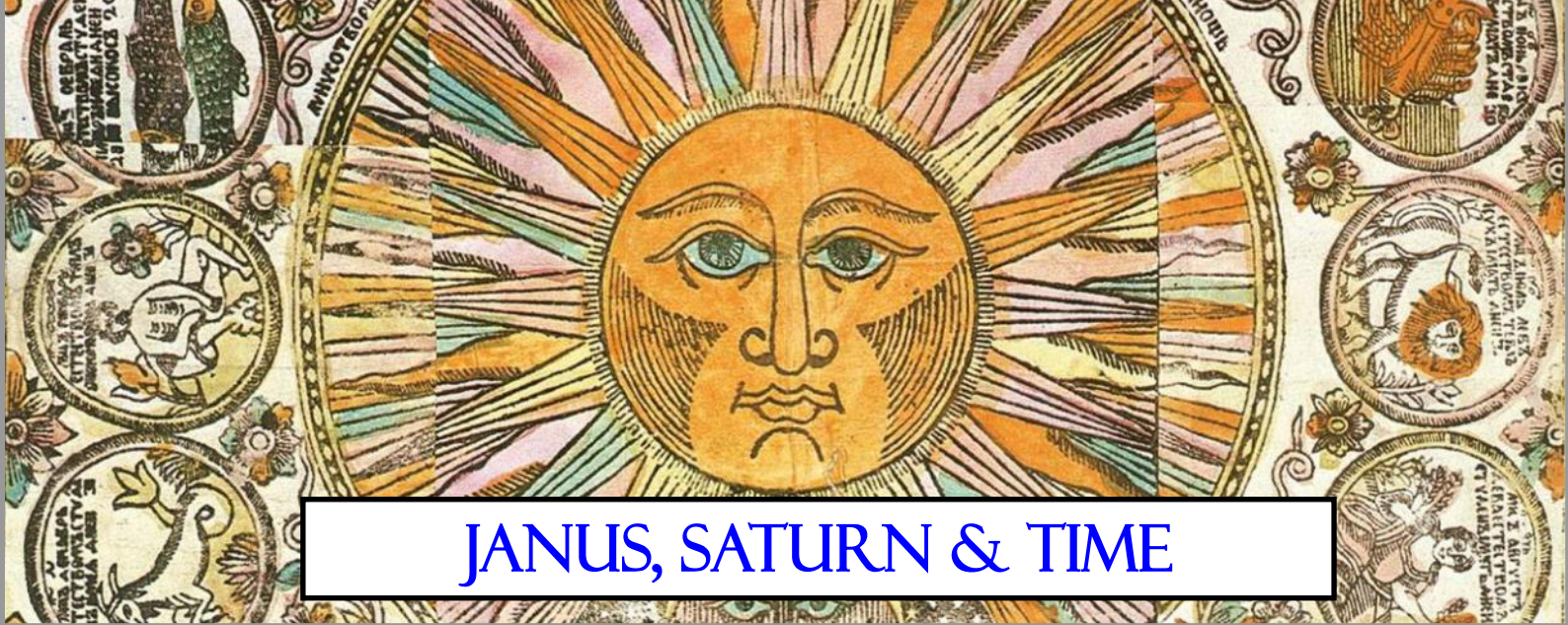
[Watch interview](#)

This book details my research into the 32-
year cycle of Venus and Mars.

The symbolic connection between the cele-
stial lovers is mirrored by their interaction as
metals copper (Venus) and iron (Mars). This
passionate exchange creates life on this plan-
et and has immense impact across social set-
tings and generations.



[Place an order](#)



JANUS, SATURN & TIME

The month of January is named after the Roman god Janus, who was the god of entrances and exits. He is usually depicted with two faces, looking in opposite directions, looking forward and looking back in time.

Unlike other Roman gods and goddesses, Janus has no equivalent Greek counterpart. In this Janus is unique.

Like Saturn, Janus is associated with time. Both are connected with January, the first month of the calendar year when the Sun is travelling through Capricorn, Saturn's sign.

Time is the dimension in which we live. It's said that time is only relative, and it depends on where we are, but it's also a factor in our development.

Many of life's important developmental stages are related to the cycle of Saturn. Every 7-8 years Saturn aspects teach us important life lessons about patience, self-discipline, managing material reality and time itself.

As the new year begins we are reminded of the fact that time seems to gather pace as we grow older. This is generally thought to be related to the fact that each day of life is a small-



er proportion of the total time we have been alive. When we are seven years old, one year is $\frac{1}{7}$ th of our life. When we are 49, seven years is $\frac{1}{7}$ th of our life. So time is also relative to the length of time we have been living in this dimension of reality.

January is the time to consider our plans for the coming 12 months. Making plans is one thing Saturn helps us to do, but there are no guar-

antees that everything will work out as planned. Still, it is important to set goals, otherwise life can become an endless series of random events and we remain unfulfilled.

Saturn motivates us to develop ambitions and goals and to strive to attain them through hard work and discipline. Janus guides us to look back and forward as we consider our options.

The Zodiac Organiser

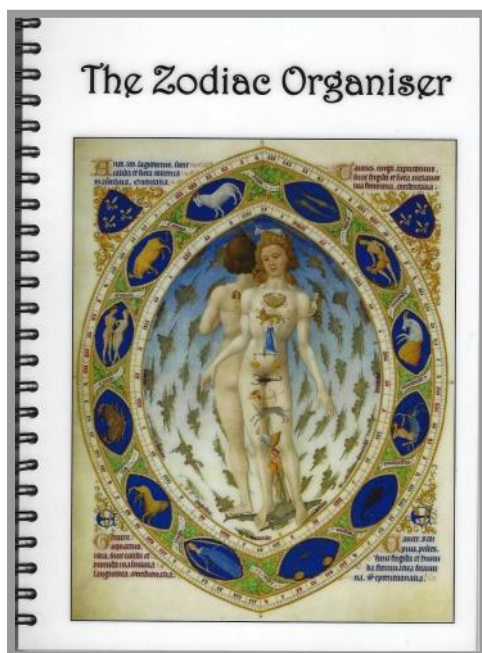
~ ~ ~

Keep all your ideas, plans, dreams and doodles together in this easy to use Zodiac Organiser.

Divided into 12 sections, one for each sign of the zodiac, you'll find a place for every aspect of your life.

From Affirmations to Adventure, from Gardening to Gift Ideas, Home to Health, there is a spot for everything.

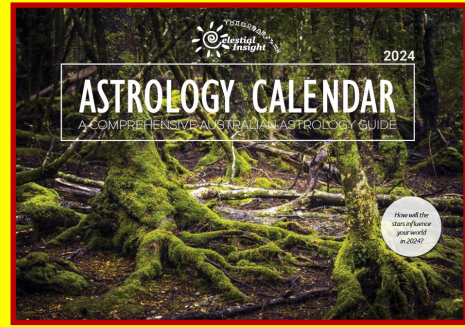
Best of all, it will be easy to find your notes again later when you need them!



Place an order

\$19.95 plus postage

Order your
2024 calendar now...



Featuring...

Beginners section, supermoons, key positions of Venus, charts and analysis of equinoxes and solstices, annual overview, plus stunning images from around Australia and more...

NOW WRAPPED IN 100% COMPOSTABLE PLASTIC

CARBON NEUTRAL

For bulk order discount Contact Michele

Place your order now.

Astrology Calendar

My Books

The Zodiac Organiser

Astrology Articles



Michele Finey

+61 (0) 434 356534

mfiney@cinsight.com.au

www.celestialinsight.com.au

